

N323BP

B/W Progressive Scan CCD Video Camera



- **1/3" Progressive Scan CCD**
*Image Sensor with Square pixel
ICX204AL*
- *Resolution 1024 (H) x 769 (V) XGA*
- *High Frame Rates, 30fps*
- *Electronic Shutter*
- *Restart / Reset, Internal/External Sync*
- *Partial Scan Mode*
- *29 (H) x 29 (W) x 29 (D) mm, 40g*

- *Application*
 - **Machine vision**
 - **Factory automation**
 - **Quality control**

Technical Data

Type <i>Image sensor</i>	N323BP 1/3" Progressive Scan Interline CCD Type: ICX 204 AL 1024 (H) x 768 (V) 4.65 (H) x 4.65 (V) µm (Square grid array) Special format (Non-conforming to EIA/CCIR) 1/30s Non-interlace mode 1/60s 2:1 Interlace mode. Switching vis rear-panel DIP SW Internal/External automatic switch-over 4:3 Standard 400Lux, F5.6, Exposure time 1/30s: GAIN 0dB; 3200°K Minimum: 2Lux, F1.4 (GAIN MAX. approx.50% video output) Exposure time 1/30s; VS50IRE VS 1.0V(p-p)/75 Ohm, DC connect; Sync. negative 768 TV lines (H) Standard: 52 dB(p-p)rms Fix (Fixed) gain: Factory shipped preset level, 0db MANU (Manual) gain: Setting through GAIN VR, 0 ~ 12dB FIX/MANU switching via rear-panel DIP SW Fixed at 1.0 Approx. 820mV(p-p) (Excluding SYNC) (820 +/-50mV(p-p) DC12V +/-10%, Ripple voltage: <50mV(p-p) or less Approx. 160mA
Video output pixels Unit pixel size TV system Video output format	
Sync system Aspect ratio Illumination	
Video output Resolution S/N Gain	
Gamma correction White-clip level Power source Power consumption	
<i>Trigger spec</i> Input signal Input level Input trigger width Capture timing	Trigger signal shall be positive; rising edge LOW level: 0-0.5V(p-p), HIGH level: 4V(p-p) 4µs ~ 250ms Rising edge detection (Positive)
<i>Electronic shutter spec</i> Normal Shutter Electronic Shutter Restart / Reset	Shutter speed setting via rear-panel SW (Initial:OFF) 7 steps selectable (=OFF, 1/125,1/250, 1/500, 1/1000, 1/2000, 1/4000, 1/10000s) Shutter speed switchable by rear panel switch 1/60s ~ 1/20,000s; 10 steps Restart/reset available via ext. VD signal(Switching via rear panel DIP SW, Initial OFF)
<i>Mechanical spec</i> External dimension Weight Lens mount Flange back	29 (H) x 29 (W) x 29(D)mm App. 44g C-Mount Flange focal distance fixed
<i>Ambient condition</i> Operation Storage	Performance guaranteed: Temperature from 0 through +40°C / Humidity from 20 through 80% (no condensing) -5°C to +45°C / Humidity 20% to 80% -25°C to +60°C / Humidity 20% to 45%
<i>Safety / Quality Standards</i> UL Standard EMC RoHS	Conform to UL standard including materials and others Conform to EN50081-2 (Emission) Test standard EN55022:1998 Class A Conform to EN50082-2 (Immunity) Test standard EN61000-4-2 ~ 4-6 Conform to RoHS
<i>Output Connector</i>	HR10A-10R12PB



NEW ELECTRONIC TECHNOLOGY Vertriebs-GmbH

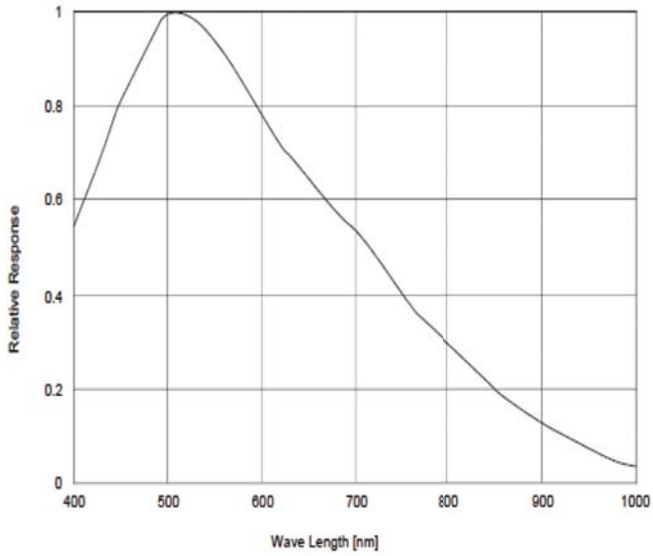
Lerchenberg 7 • D 86923 Finning, Germany • Phone: +49(0)88 06 - 92 34-0 • Fax: +49(0)88 06 - 92 34-77
E-mail: info@net-gmbh.com

NET USA, Inc.

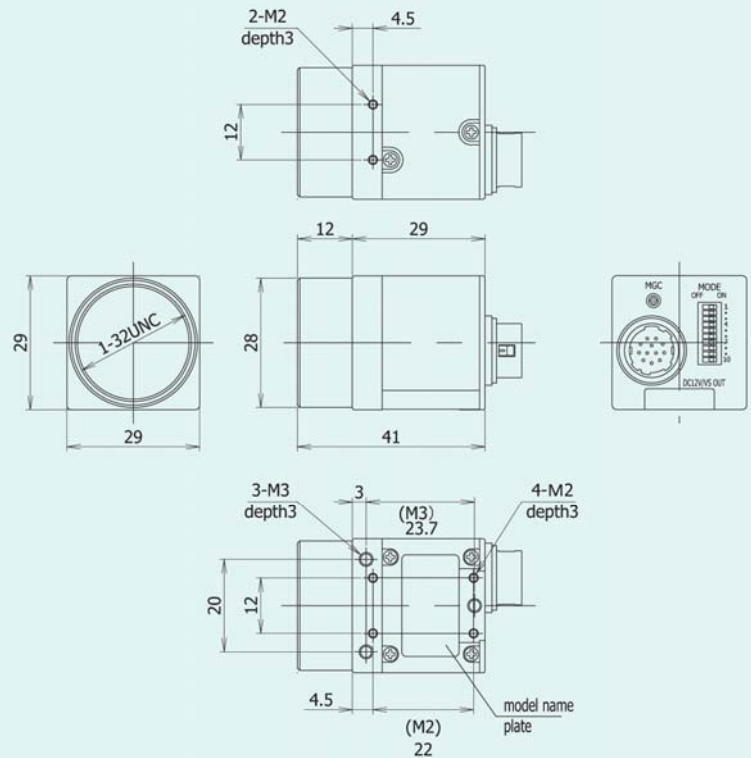
3037-45th Street #8 • Highland, IN 46322 • Phone: (219) 934-9042 • Fax: (219) 934-9047
E-mail: info@net-usa-inc.com

www.net-gmbh.com

Relative Spectrum Response



Outline



NEW ELECTRONIC TECHNOLOGY Vertriebs-GmbH

Lerchenberg 7 • D 86923 Finning, Germany • Phone: +49(0)88 06 - 92 34-0 • Fax: +49(0)88 06 - 92 34-77
E-mail: info@net-gmbh.com

NET USA, Inc.

3037-45th Street #8 • Highland, IN 46322 • Phone: (219) 934-9042 • Fax: (219) 934-9047
E-mail: info@net-usa-inc.com

www.net-gmbh.com