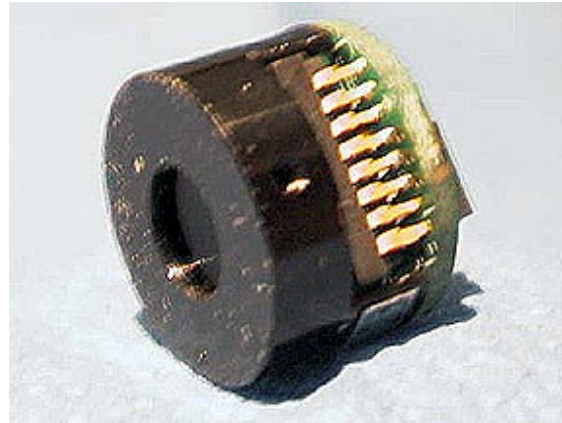


CSH-1.2"-low CSH-1.3"-low

1-CCD Color-Videocamera head



This OEM camerahead is available with 1/2" and 1/3" CCD sensors. It was designed for easy integration into custom systems. The CCD is contained in a universal cylindrical housing, allowing a simple, economical integration. The large choice of adaptable mainboards allow these camera heads to be used in a wide range of applications.



Above: CSH-1.3"-low-00 (without housing)
Below: CSH-1.3"-low-01 (with housing)



CSH-1.2"-low & CSH-1.3"-low system

Features

- 1/2" or 1/3" CCD
- IR- cut and OLPF filter
- 2 Versions available

Applications

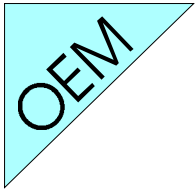
- Endoscopy, Dental
- Dermatology, Ophthalmology
- Image processing, Visualisation

Delivery includes

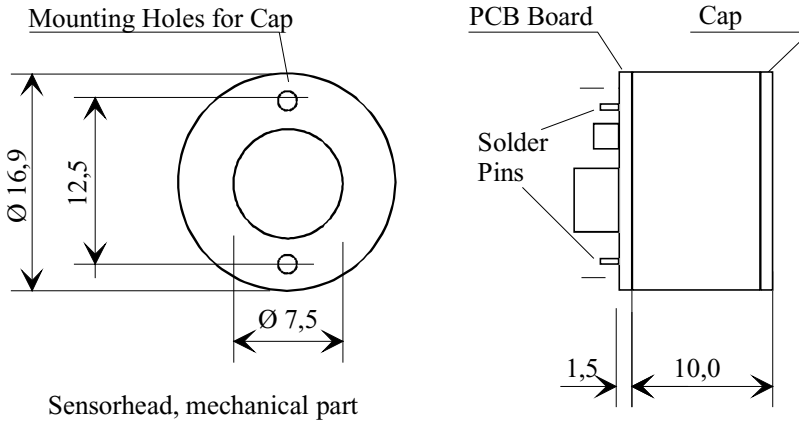
- CSH-1.2"- low or CSH-1.3"- low
- 3m cable
- Option: special cable with additional function
- Option: EMI housing

Specifications

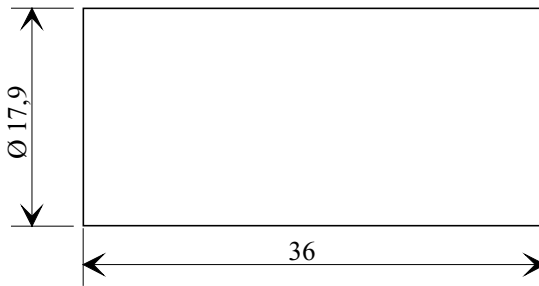
	CSH-1.x"-low	CSH-1.x"-low-P
TV system	NTSC	PAL
Image sensor	IT 1/2" or 1/3" CCD	
Active Pixel	758(H)x492(V)	752(H)x582(V)
Active image area (H)x(V)mm	7.95x6.45 or 6.00x4.96	
Scanning Lines	525	625
Scanning system	2:1 Interlaced	
Scanning frequency horizontal	15.743kHz	15.625kHz
Scanning frequency vertical	59.94Hz	50Hz
Aspect ratio	4 : 3	
Sensitivity	720 mV	
Resolution horizontal	470 Lines	470 Lines
Resolution vertical	350 Lines	420 Lines
Environmental conditions	temperature	: 0 to +40°C
	relative humidity	: 30 to 90%
Dimensions	see page 2	



Outline



Sensorhead, mechanical part



Sensorheadhousing

in mm

CSH-1.3"-low system

Design and Specifications are subject to change without notice